

- EPJ.P - 4,4*
- EPJ.P - 5,5*
- EPJ.P - 4,4u*
- EPJ.P - 5,5u*

Electric Instantaneous Water Heater

Primus

Operating And Installation Instructions



Please, read and follow the instalation and operating instructions carefully, to ensure the long life and reliable operation of this appliance.

Kospel S.A. may make minor changes if necessary, in the appliance, that will not be shown in the operating instruction, so long as the main features of the heater remain the same.

KOSPEL S.A. 75-136 KOSZALIN UL. OLCHOWA 1

Description

You must not install this appliance in places exposed to the danger of explosion and places in which the temperature may go down below 0°C.

Technical data

This appliance will work with the attached tap set only.

You must not install in direct vicinity of the range of spray of the spray-head.

The tap set works as an air vent and therefore, cannot be connected to any valve or a connector that is not recommended by the manufacturer.

The EPJ.P Instantaneous Water Heater provides hot water under the shower. It can be installed either over a bath or inside a shower cabin. Turning the hot water tap on, automatically starts up the heater (a red light on the heater's outer case comes on). Water is heated instantly as a result. The temperature of heated water depends on the rate of flow: the greater the flow, the lower the temperature. Turning the hot water off, shuts the appliance.

The heater features:

- tubular heating coils that assure maximum safety
- materials resistant to corrosion and chemically inactive with water (copper, brass, stainless steel, plastic)

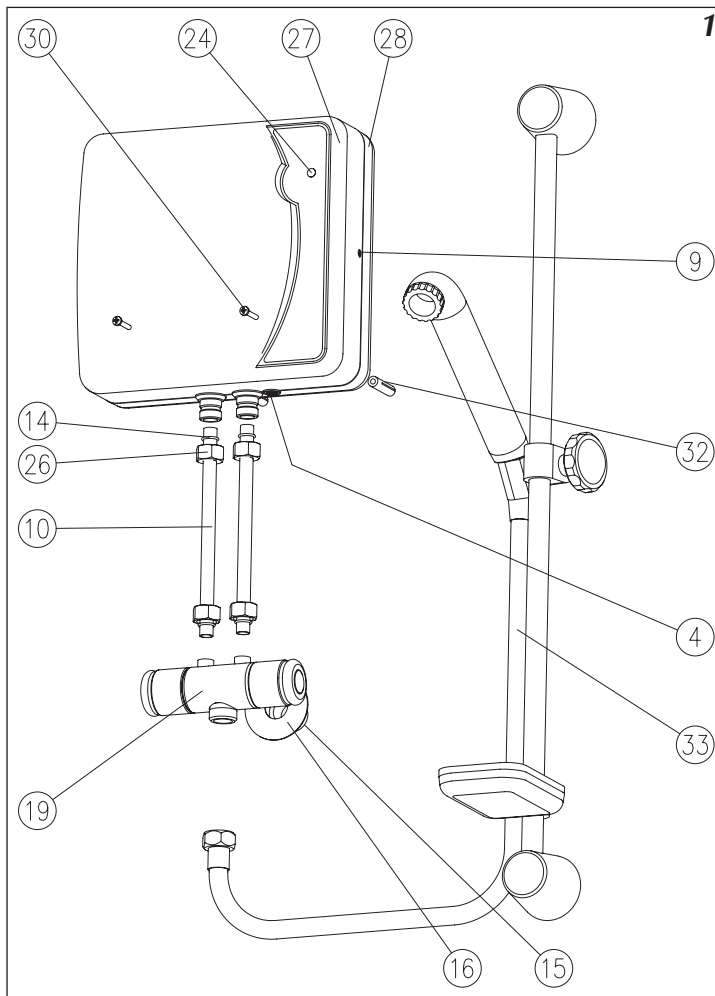
EPJ.P water heater		4,4	5,5
Rated power	kW	4,4	5,5
Rated voltage		230 V~	
Rated current	A	19,1	23,9
Minimum pressure	MPa	0,12	
Protection degree		IP 25	
Operating pointa	l/min	1,8	2,2
Efficiency ($\Delta t=30^{\circ}\text{C}$)	l/min	1,9	2,4
Dimensions (without the mixer)	mm	214 x 218 x 95	
Weight (heater + mixer)	kg	2,2 + 0,6	
Fuse rated current	A	20	25
Min section of supply conductors	mm ²	3 x 2,5	
Water connections		G 1/2"	

Installation

All installation work has to be carried out with the electricity and water supplies cut off.

Picture 1 View EPJ.P.... version

- [4] - flow regulating valve
- [9] - screws for fixing the case
- [12] - filter
- [13] - gasket
- [15] - water supply
- [16] - rosette
- [17] - extension
- [19] - tap body
- [23] - sprayhead
- [24] - heating on indicator
- [26] - nuts
- [27] - front case
- [28] - back case
- [29] - tap
- [30] - fixing screw
- [31] - sleeve
- [32] - pin
- [33] - shower set



1 Recommendation

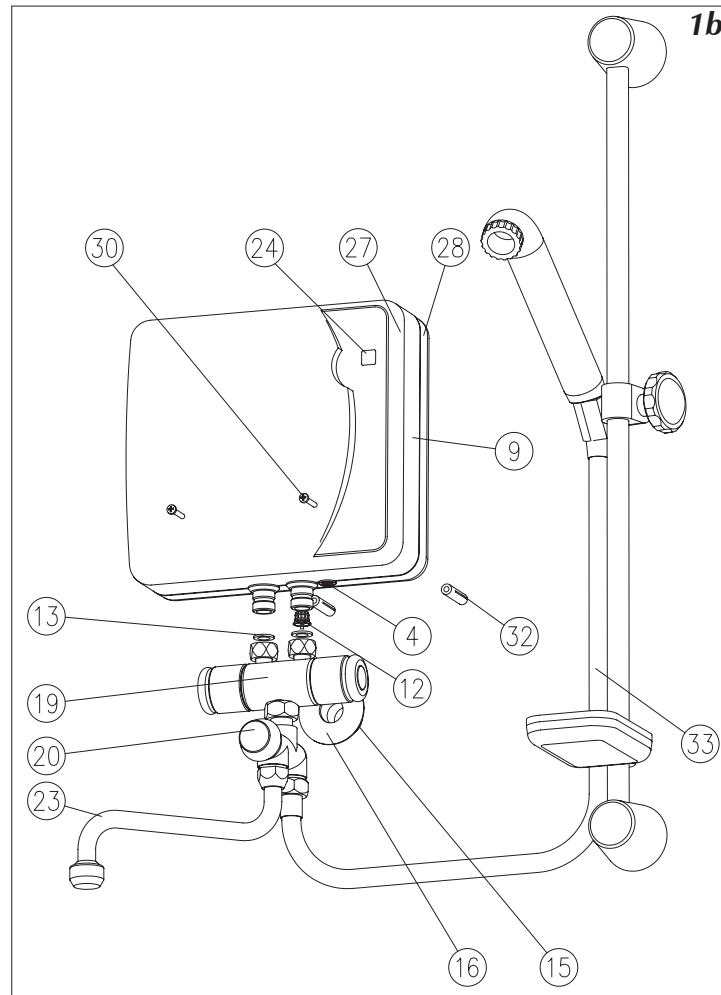
- the appliance connect to cold water supplies only
- do not install the spray-head holder above the heater
- install the spray-head holder on the same wall where the heater is installed

Installation - Assembly

1. Fix the mixer [19] on water supply pipe [15].
2. Undo the two screws [9] and take the front case [27] off.
3. Connect the mixer by the use of metal pipes with the heater in order to mark the fixing points for the screws [32].
4. Drill holes at the marked places, insert the screws [32] in there.
5. Insert electric wires into the heater through the stuffing [5] picture 5.
6. Install the heater onto the wall.
7. Connect the mixer and the shower set with the heater.
8. Connect electric supplies according to Diagram 2.
9. Fix the front case and screw it up.
10. Install the shower holder.
11. Let the mains water pressure to get to the mixer.
12. Check connections for leaks.
13. Vent the installation.
14. Switch electric supplies on (fuses).

Picture 1b View EPJ.P-...u version

- [4] - flow regulating valve
- [9] - screws for fixing the case
- [12] - filter
- [13] - gasket
- [15] - water supply
- [16] - rosette
- [17] - extension
- [19] - tap body
- [20] - sink-shower switch
- [23] - sprayhead
- [24] - heating on indicator
- [27] - front case
- [28] - back case
- [30] - fixing screw
- [32] - pin
- [33] - shower set



The heater has to be earthed or neutrally grounded.

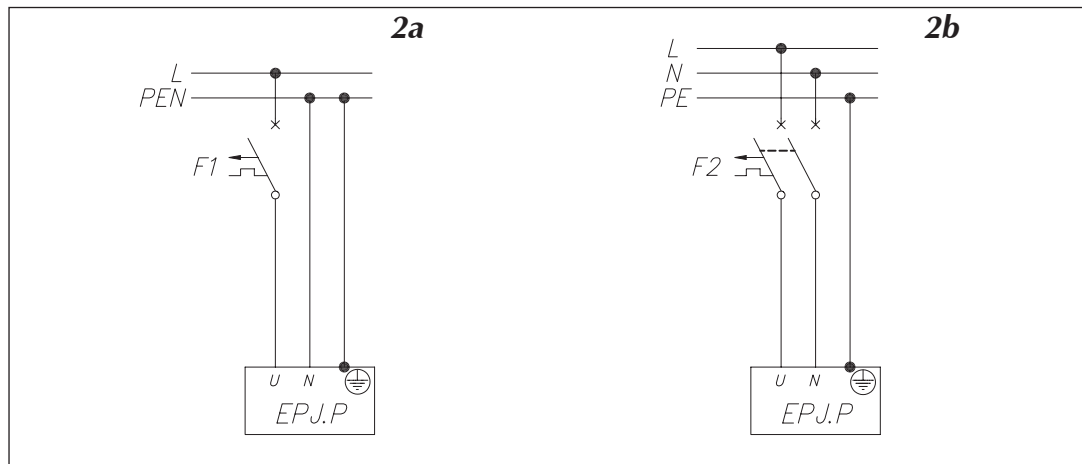
Diagram 2a Electric connection in TN-C-S system:

- F1 - unipolar circuit breaker
- L - live wire
- PEN - neutral-earth wire

Diagram 2b Electric connection in TN-S system:

- F2 - dipolar circuit breaker
- L - live wire
- N - neutral wire
- PE - earth wire

Electric connection and anti-electric shock protection test has to be carried out by a qualified electrician.



Venting

Do it each time after a decay of water.

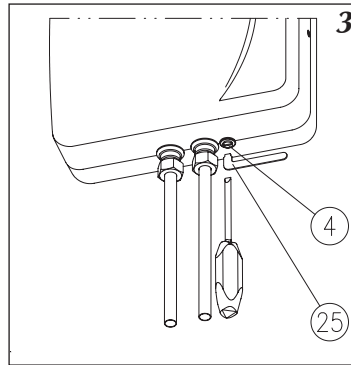
If venting is not carried out, the heater may be damaged.

1. Shut off electric supplies.
2. Turn the flow on (turn the hot water tap on) in order to vent the water installation (for about 15-30 seconds), until the flow of water becomes constant and even.
3. Shut the flow.
4. Switch the electric supplies on.

Flow regulation

Picture 3 Regulation

- [4] - regulating valve
- [25] - regulating spanner



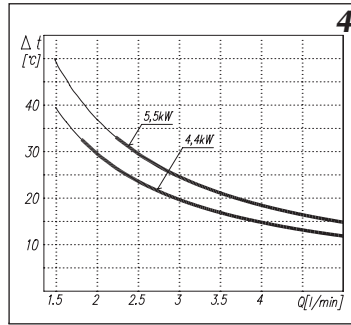
By the term "flow regulation" we mean the setting of the water temperature to a comfortable level, by means of limiting/opening the rate of flow.

For this purpose, carry out the following steps:

- insert the spanner [25] into the regulation valve [4],
- set the hot water tap at maximum flow,
- set optimum flow (check if the temperature is comfortable for you) using the spanner [25],
- shut water flow using the tap,
- take the spanner [25] out of the regulation valve [4].

Operation

Chart 3 Characteristics



This heater has a differential pressure switch that starts heating automatically when there is a proper rate of flow through the tap. There is a red indicator light on the front case that shows that heating is on.

The characteristics shows the dependence between temperature rise and flow rate per minute. The greater the flow rate the lower temperature of the water.

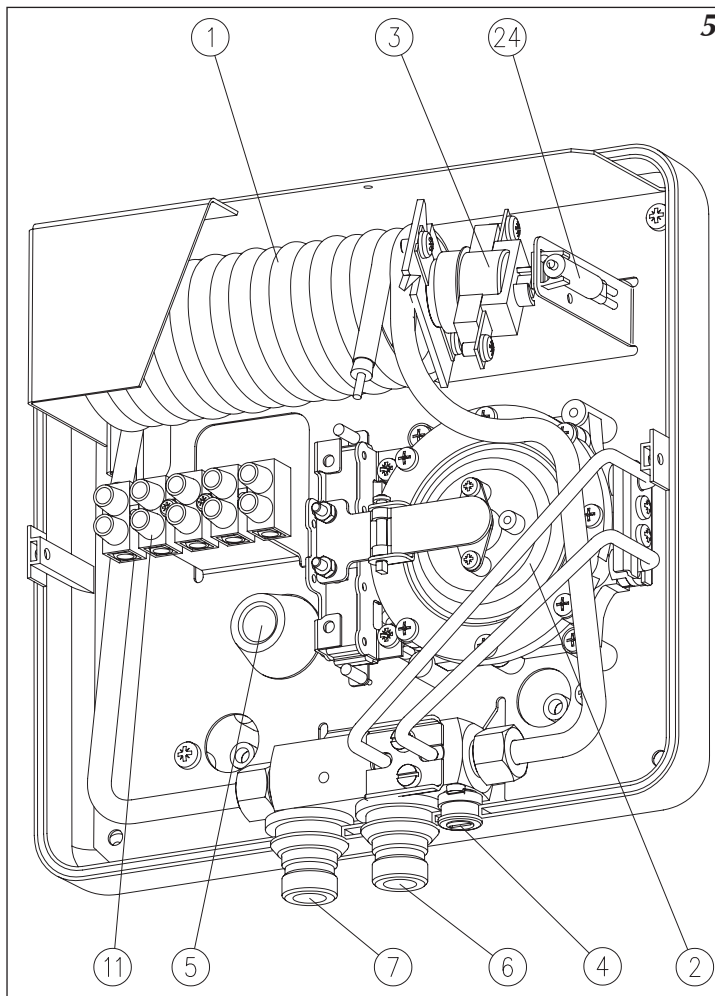
Maintenance

Get rid of boiler scale from the spray-head on regular basis.

Boiler scale may appear in the holes of the shower spray-head. Undo the spray-head and clean it with a hard brush.

Picture 5 Construction of the appliance

- [1] - heating box
- [2] - differential pressure switch
- [3] - safety temperature limiter
- [4] - regulating valve
- [5] - stuffing - box
- [6] - inlet - cold water
- [7] - outlet - hot water
- [11] - terminals
- [24] - "heat on" indicator



5

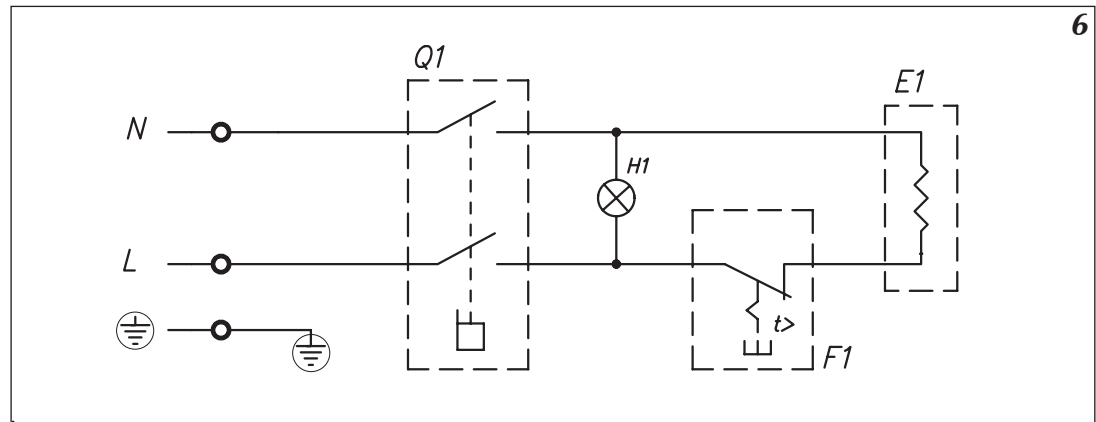
See general construction of the appliance in the diagram no. 5.

Safety temperature limiter [3] protects against overheating. After the limiter goes off, you can turn the hot water tap on but heating will not start.

Resetting the safety temperature limiter should be carried out by an authorised service.

Diagram 6 Wiring diagram

- E1 - heating box [1]
- Q1 - differential pressure switch [2]
- F1 - safety temperature limiter [3]
- H1 - heating indicator [24]



6

Faults

In case the appliance does not heat water, check for possible reasons:

- a failure of mains supplies (e.g. fuses),
- insufficient flow through the heater (e.g. incorrect setting of the flow regulating valve) - refer to "Flow regulation".

The guarantee does not cover the above repairs.

If there is a fault in the appliance (the heater does not work and all the above reasons do not occur), contact the nearest authorised service.

Set contents

EPJ.P water heater	- 1 piece,
Spanner for flow regulation	- 2 pieces,
Screw	- 1 piece,
Sleeve	- 1 piece,
Mixer set	- 1 piece,
Connecting tube	- 2 pieces,
Shower set	- 1 piece,
Installation and operation manual	- 1 piece.



electric
water heaters

electric
boilers.